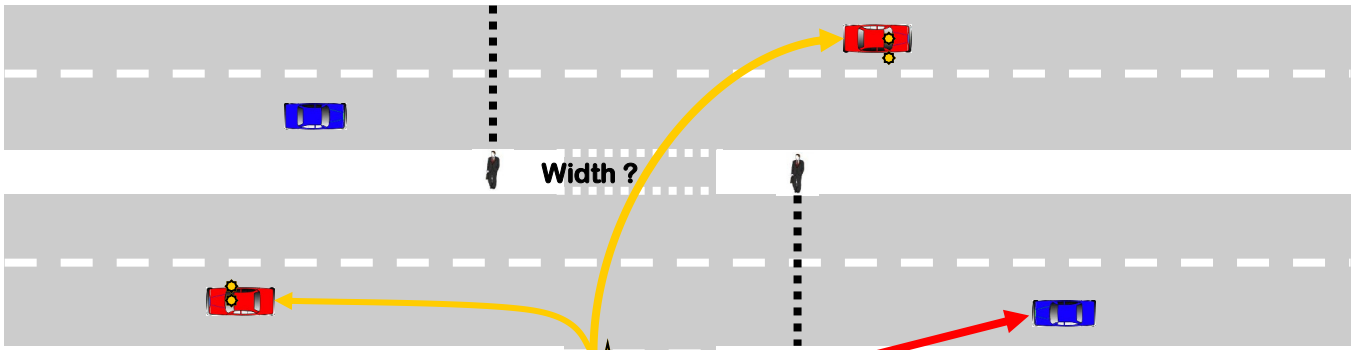


# DUAL CARRIAGEWAYS

LEFT/RIGHT EMERGE

NDP

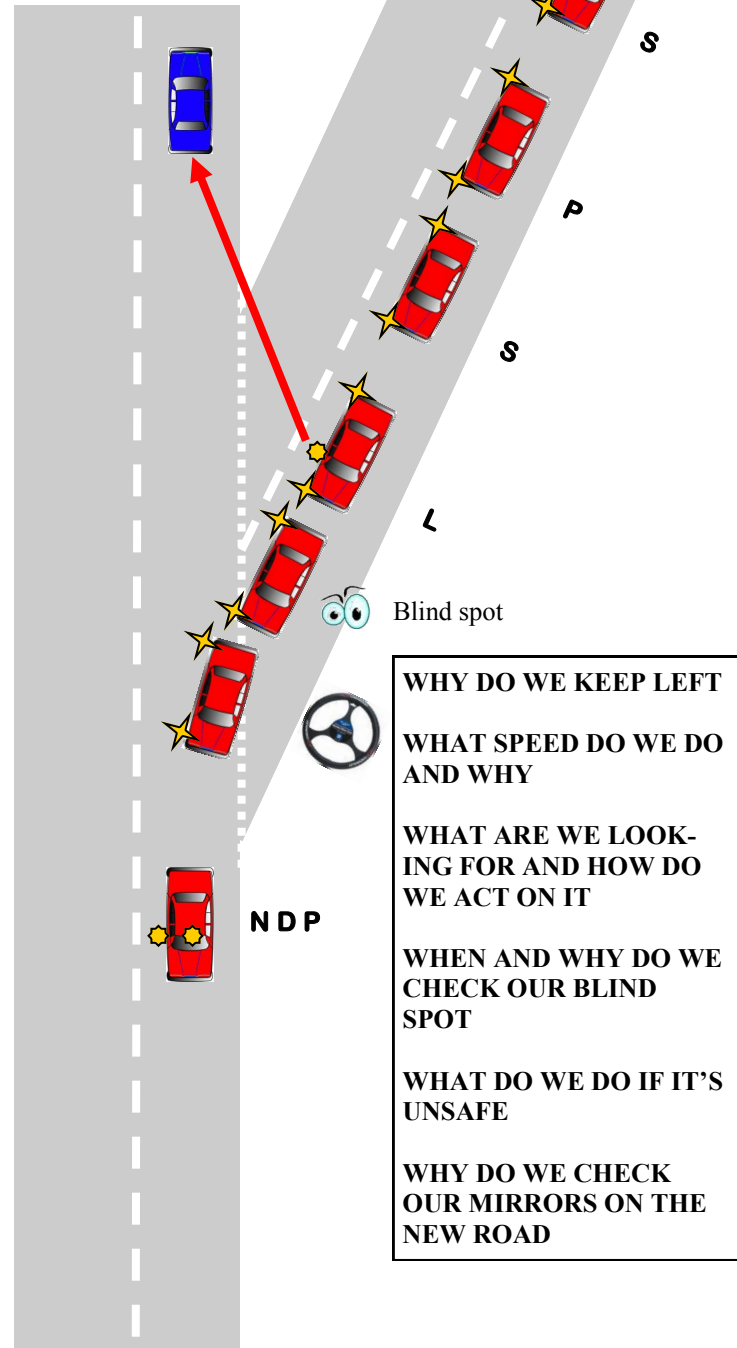
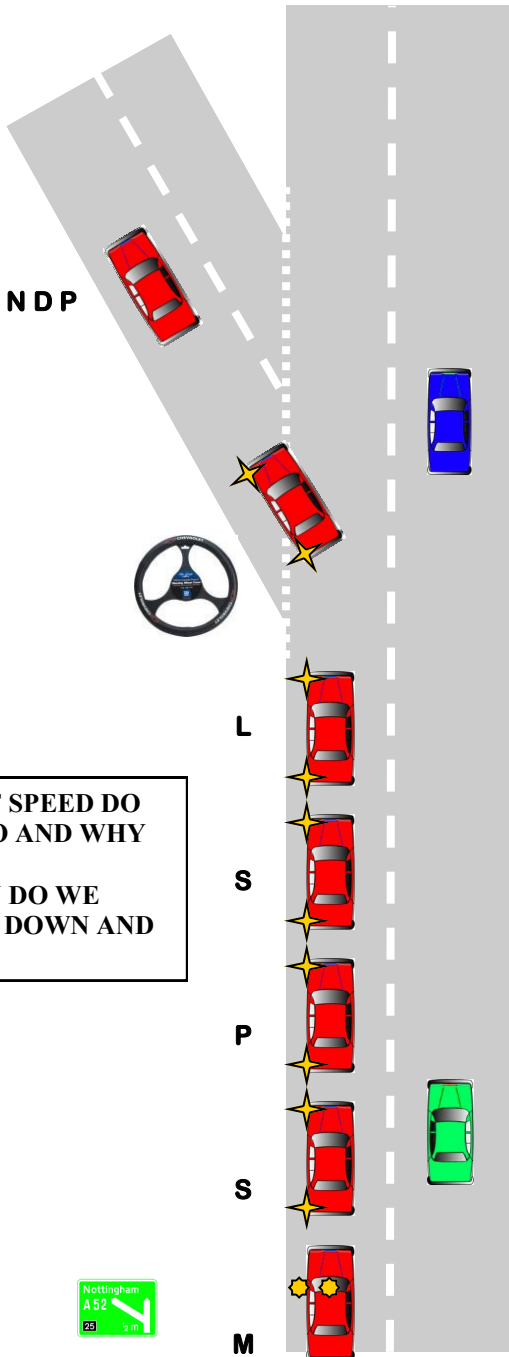


NDP

P  
O  
M  
L  
S  
P  
S  
M

EXIT (SLIP ROAD)

EMERGE (SLIP ROAD)



WHAT SPEED DO WE DO AND WHY  
WHEN DO WE SLOW DOWN AND WHY

WHY DO WE KEEP LEFT  
WHAT SPEED DO WE DO AND WHY  
WHAT ARE WE LOOKING FOR AND HOW DO WE ACT ON IT  
WHEN AND WHY DO WE CHECK OUR BLIND SPOT  
WHAT DO WE DO IF IT'S UNSAFE  
WHY DO WE CHECK OUR MIRRORS ON THE NEW ROAD

