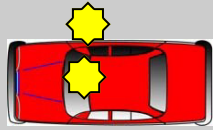


# LEFT EMERGE

**MIRRORS INTO NEW ROAD**  
WHICH & WHY  
WHAT ACTIONS

**WHAT'S THIS**



R.L.R



2ND



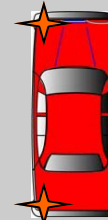
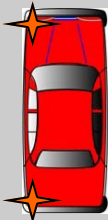
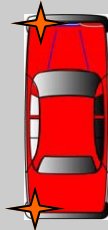
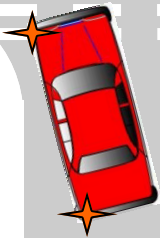
OPEN

1ST



CLOSED

P O M



S  
1st  
2nd

P  
NDP

S

M

**LOOKING.**

**WHO HAS PRIORITY** - They do so I have to give way or stop.

**WHAT ACTIONS** - Assess the Situation and move when its safe. If I can't see I can't go so I have to peep & creep.

**SPEED**  
WHAT SPEED & WHY  
WHAT GEAR  
WHY 1ST  
WHY 2ND

**POSITION** - N D P  
**WHEN** - You should already be there.  
**WHY** - To keep a good distance from the kerb

**SIGNAL** - Left  
**WHEN** - A good distance from the junction 6 or 7 cars  
**WHY** - To let people know what I intend to do.

**MIRRORS** - Internal & Left hand  
**WHY** - To see if it's safe to do what I want to do.  
**WHEN** - Good distance 8 to 10 cars

**IDENTIFY**  
**STOP OR GIVE WAY**

