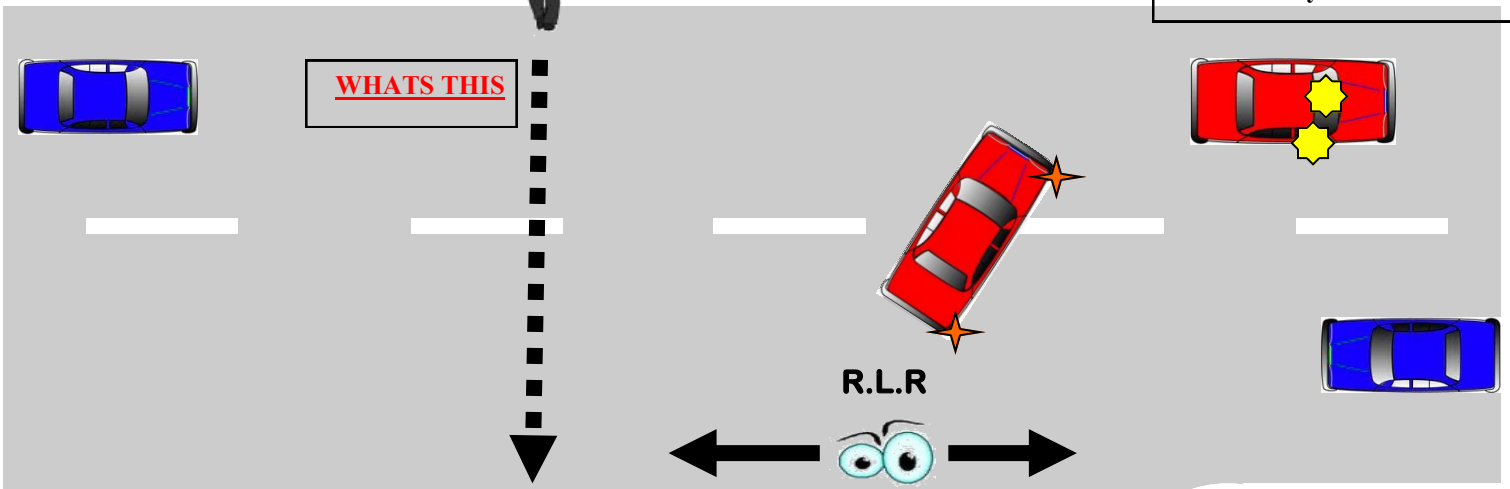


RIGHT EMERGE

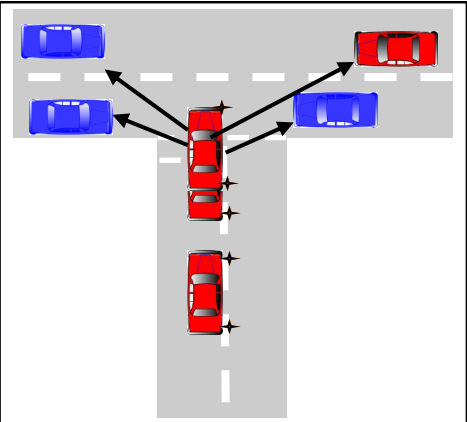
MIRRORS IN NEW ROAD
Internal & Right hand. & Act on what you see



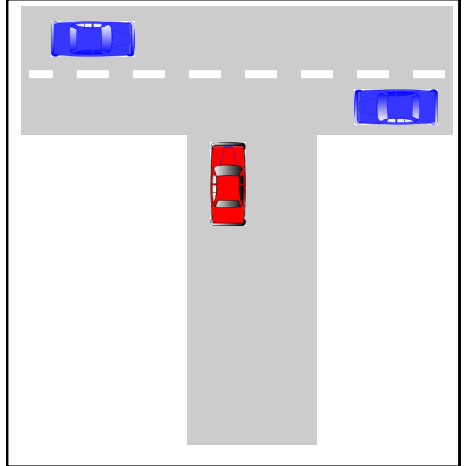
2ND ↑
OPEN

1ST ↑
CLOSED

PEEP & CREEP
WHY & HOW



UNMARKED JUNCTION



P O M

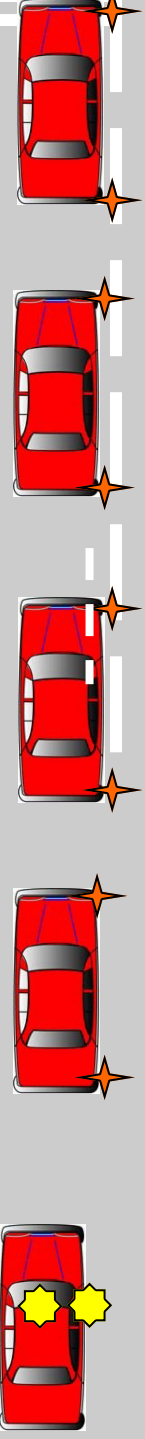
L

S
1st
2nd

P
L.O.C

S

M



LOOKING

WHO HAS PRIORITY - They do so I have to Give way or stop.

WHAT ACTIONS - Assess the situation and move when safe. If I can't see I can't go so I have to peep & creep.

SPEED - Slow and at a speed I can assess the junction

WHAT GEAR
WHY 1ST - If closed
WHY 2ND - If open

POSITION - Left Of Centre.

WHEN - 5 to 6 cars or depending on road conditions.

WHY - To show our intent and free up space on the left

SIGNAL - Right

When—A good distance from the junction 6 or 7 cars.

Why To let people know what I intend to do.

MIRRORS - Internal & Right Hand

WHY - To see if its safe to do what I want to do

WHEN - Good distance 8 to 10 cars

IDENTIFY
STOP OR GIVE WAY