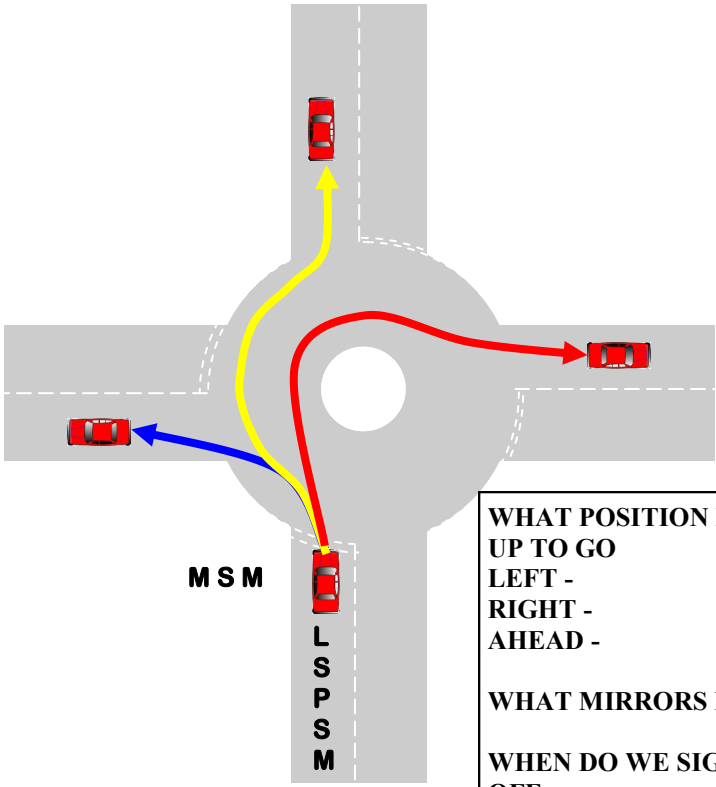
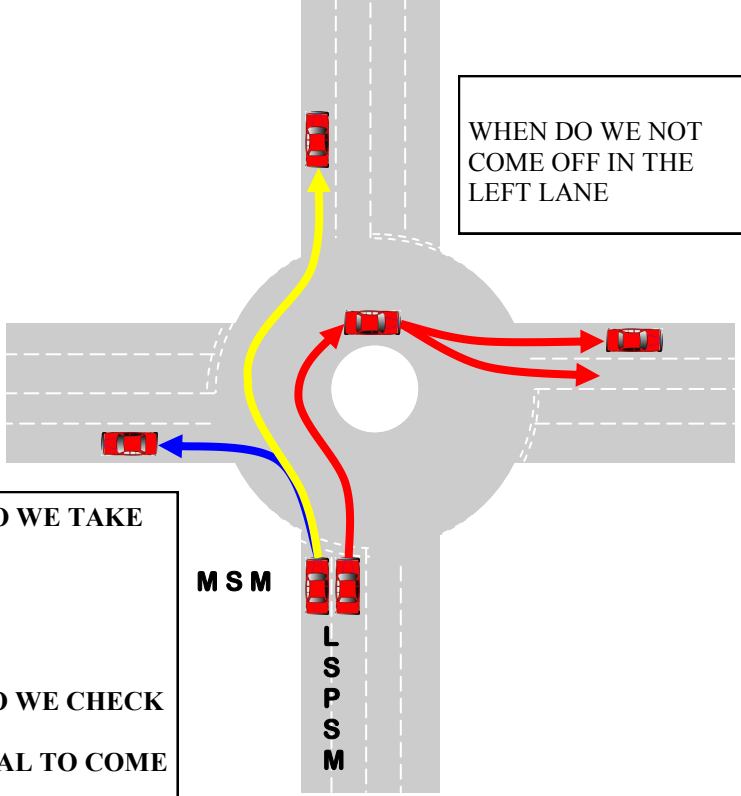


Roundabouts

SINGLE LANE



TWO LANE



WHEN DO WE NOT COME OFF IN THE LEFT LANE

WHAT POSITION DO WE TAKE UP TO GO
 LEFT -
 RIGHT -
 AHEAD -

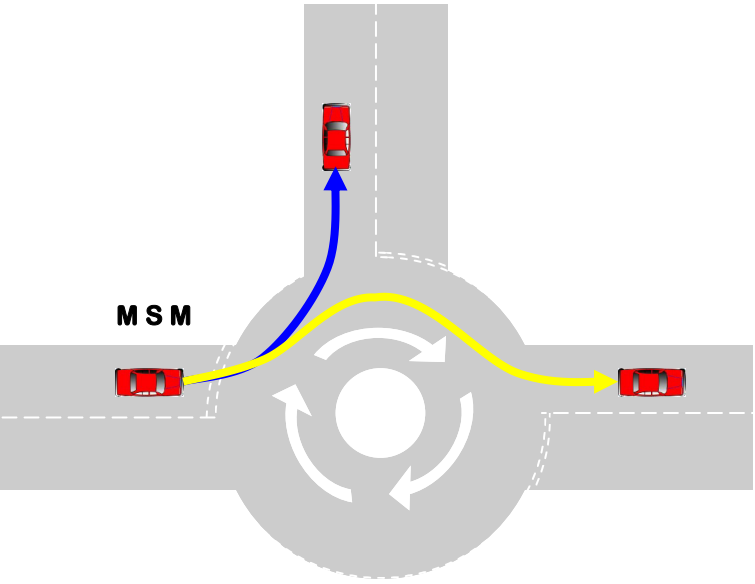
WHAT MIRRORS DO WE CHECK

WHEN DO WE SIGNAL TO COME OFF

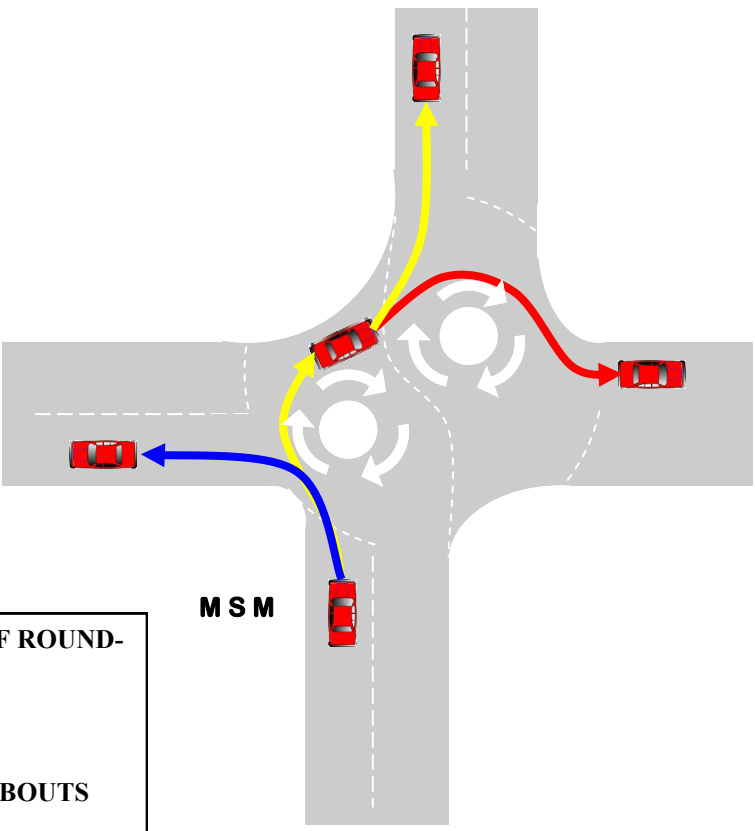
WHO HAS PRIORITY

WHAT CAN HELP US AND WHY

MINI ROUNDABOUT



DOUBLE ROUNDABOUT



DO WE ALWAYS SIGNAL TO COME OFF ROUNDABOUTS

IF NOT WHY NOT

HOW DO WE TREAT DOUBLE ROUNDABOUTS