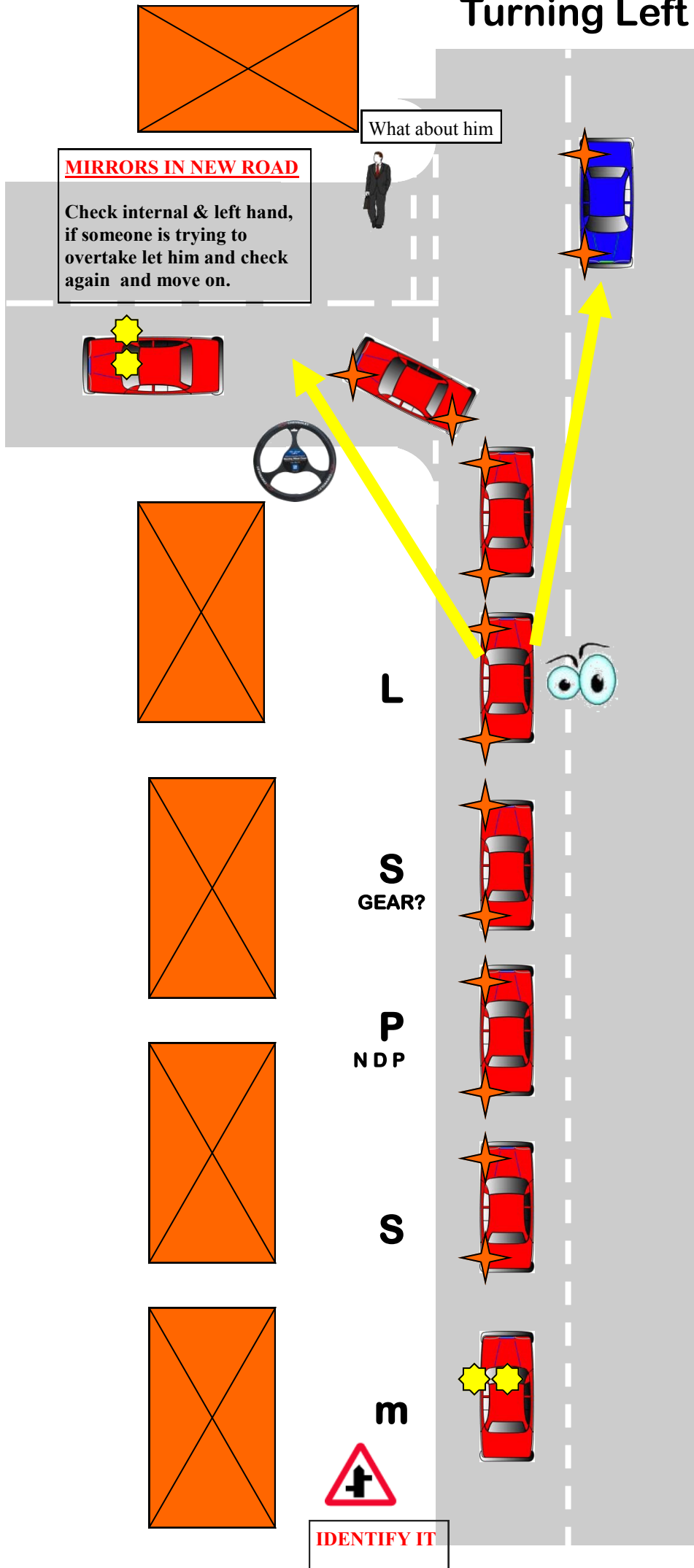


Turning Left



MIRRORS IN NEW ROAD

Check internal & left hand, if someone is trying to overtake let him and check again and move on.

What about him

LOOKING - Ahead and into the junction
WHEN, ASAP
WHY - To assess
WHO HAS PRIORITY - I have but don't assume
WHAT ACTIONS - React on what I see or happens

SPEED - Slow and At a speed I can control my car.
WHAT GEAR
WHY 1ST - If closed
WHY 2ND - If open

POSITION - NDP
Why - To keep a good distance from the kerb
Reference -

SIGNAL - LEFT
When—A good distance from the junction 6 or 7 cars.
Why To let people know what I am doing.

MIRRORS—Internal & Left
WHEN - 8 to 10 cars or a good distance your visual.
Why - To see what is happening behind and to the side

IDENTIFY IT